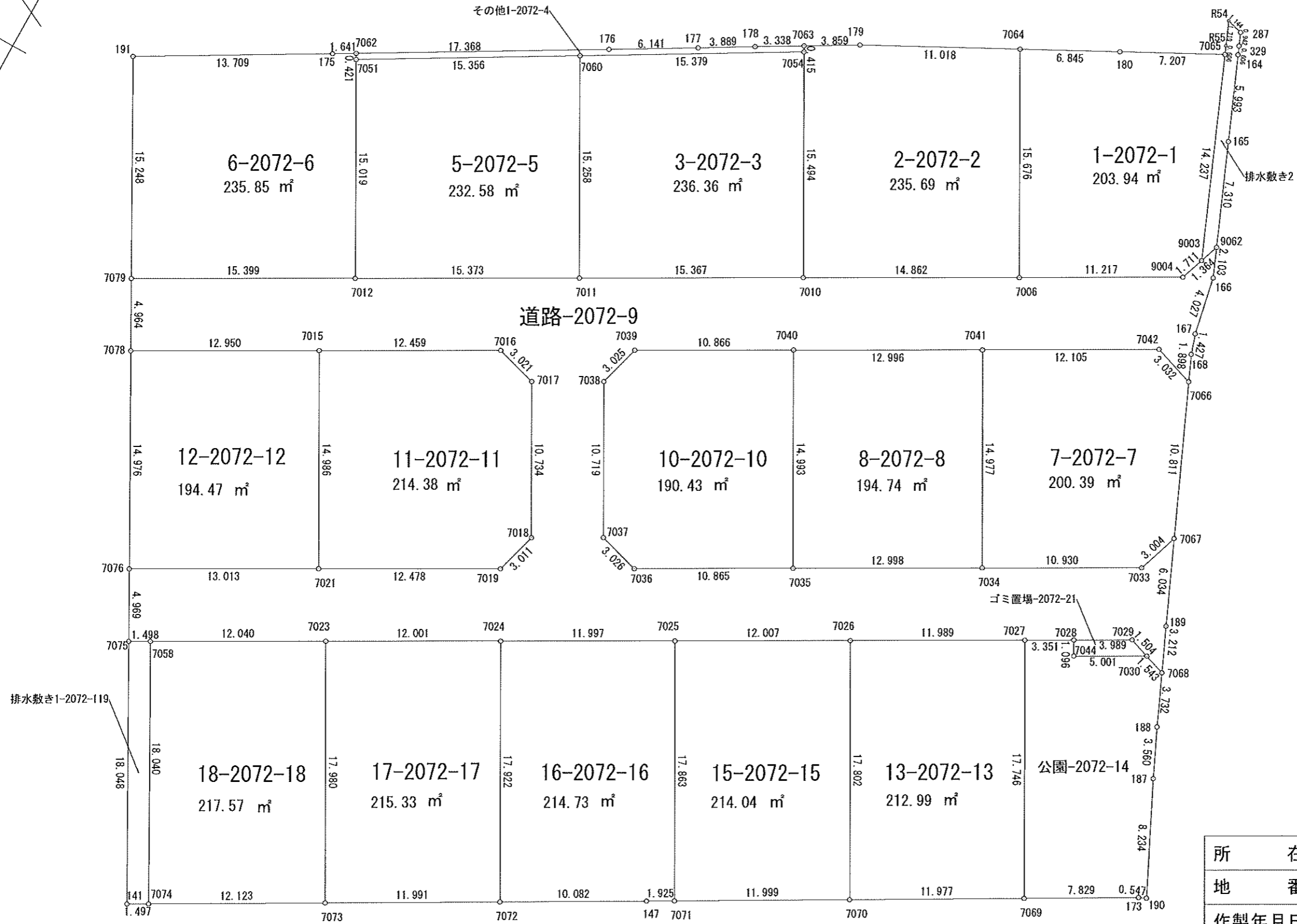
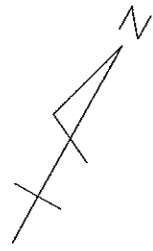


実測図 S=1:300



所在	丸亀市飯山町東坂元字楠見字2072他
地番	
作製年月日	令和3年6月19日
作製者	高松市円座町1580-10 土地家屋調査士・二級建築士 岡野上竜二 宅地建物取引士

求積表

地番 A 1-2072-1					
NO	Xn	Yn	Yn+1-Yn-1	Xn・(Yn+1-Yn-1)	
7064	140422.112	33612.006	-1.465	-205718.394080	
180	140425.246	33618.091	12.486	1753349.621556	
7055	140428.557	33624.492	11.860	1665482.685020	
9003	140415.408	33629.951	4.683	895648.437264	
9004	140413.797	33629.375	-10.395	-1459601.419815	
7006	140408.374	33619.556	-17.369	-2438753.048006	
合計			407.682939		
合計面積			203.9414695		
地積			203.94	㎡	

地番 B 2-2072-2					
NO	Xn	Yn	Yn+1-Yn-1	Xn・(Yn+1-Yn-1)	
7063	140415.156	33598.858	3.153	442728.986868	
179	140417.067	33602.211	13.148	1846203.596916	
7064	140422.112	33612.006	17.345	2435621.532640	
7006	140408.374	33619.556	-5.476	-768876.265024	
7010	140401.219	33606.530	-20.498	-2877944.187062	
7054	140414.792	33599.058	-7.672	-1077262.284224	
合計			471.389114		
合計面積			235.6945570		
地積			235.69	㎡	

地番 C 3-2072-3					
NO	Xn	Yn	Yn+1-Yn-1	Xn・(Yn+1-Yn-1)	
7060	140407.164	33585.704	5.987	840617.690868	
7054	140414.792	33599.058	20.826	2924278.458192	
7010	140401.219	33606.530	-5.987	-840582.098153	
7011	140393.802	33593.071	-20.826	-2923841.320452	
合計			472.730455		
合計面積			236.3652275		
地積			236.36	㎡	

地番 D 5-2072-5					
NO	Xn	Yn	Yn+1-Yn-1	Xn・(Yn+1-Yn-1)	
7051	140399.545	33572.371	6.098	856156.425410	
7060	140407.164	33585.704	20.700	2906428.294800	
7011	140393.802	33593.071	-6.098	-856121.404596	
7012	140386.384	33579.606	-20.700	-2905998.148800	
合計			465.166814		
合計面積			232.5834070		
地積			232.58	㎡	

地番 E 6-2072-6					
NO	Xn	Yn	Yn+1-Yn-1	Xn・(Yn+1-Yn-1)	
191	140392.335	33558.820	4.622	648893.372370	
175	140389.101	33570.743	13.348	1874047.200148	
7062	140389.914	33572.168	1.628	228571.058992	
7051	140399.545	33572.371	7.438	1044291.815710	
7012	140386.384	33579.606	-6.250	-877414.900000	
7079	140378.949	33566.121	-20.786	-2917916.839114	
合計			471.714306		
合計面積			235.8571530		
地積			235.85	㎡	

地番 F 7-2072-7					
NO	Xn	Yn	Yn+1-Yn-1	Xn・(Yn+1-Yn-1)	
7041	140402.814	33619.740	3.362	472034.260668	
7042	140408.674	33630.332	13.465	1890602.795410	
7066	140407.705	33633.205	7.203	1011356.699115	
7067	140397.799	33637.535	3.344	469490.239856	
7033	140394.961	33636.549	-10.565	-1483272.762965	
7034	140389.698	33626.970	-16.809	-2359810.433682	
合計			400.788402		
合計面積			200.3692010		
地積			200.39	㎡	

地番 G 8-2072-8					
NO	Xn	Yn	Yn+1-Yn-1	Xn・(Yn+1-Yn-1)	
7040	140396.555	33608.351	4.153	583066.829215	
7041	140402.814	33619.740	18.619	2614159.993866	
7034	140389.698	33626.970	-4.153	-583038.415794	
7035	140383.424	33615.587	-18.619	-2613798.971456	
合計			389.499531		
合計面積			194.7497655		
地積			194.74	㎡	

地番 H 道路-2072-9					
NO	Xn	Yn	Yn+1-Yn-1	Xn・(Yn+1-Yn-1)	
7079	140378.949	33566.121	11.108	1559329.365492	
7012	140386.384	33579.606	26.950	3783413.048800	
7011	140393.802	33593.071	26.924	3779962.725048	
7010	140401.219	33606.530	26.485	3718526.285215	
7006	140408.374	33619.556	22.845	3207629.304030	
9004	140413.797	33629.375	10.395	1459601.419815	
9003	140415.408	33629.951	1.035	145329.947280	
9062	140416.692	33630.410	1.268	178048.365456	
166	140414.751	33631.219	1.593	223680.698343	
167	140410.801	33632.003	1.226	172143.642026	
168	140409.444	33632.445	1.202	168772.151688	
7066	140407.705	33633.205	-2.113	-296681.480665	
7042	140408.674	33630.332	-13.465	-1890602.795410	
7041	140402.814	33619.740	-21.981	-3086194.254534	
7040	140396.555	33608.351	-20.910	-2935691.965050	
7039	140391.319	33598.830	-10.351	-1453190.542969	
7038	140388.410	33598.000	4.337	608864.534170	
7037	140379.019	33603.167	8.073	1133279.820387	
7036	140378.176	33606.073	12.420	1743496.945920	
7035	140383.424	33615.587	20.897	2933592.411328	
7034	140389.698	33626.970	20.962	2942848.849476	
7033	140394.961	33636.549	10.565	1483272.762965	
7067	140397.799	33637.535	3.403	477773.709997	
189	140392.270	33639.952	3.714	521416.890780	
7068	140389.332	33641.249	-0.162	-22743.071784	
7030	140389.835	33639.790	-2.882	-404603.504470	
7029	140390.323	33638.367	-4.912	-899597.266576	
7028	140388.390	33634.878	-6.426	-902135.794140	
7027	140386.777	33631.941	-13.435	-1888096.348995	
7026	140380.986	33621.443	-21.014	-2949866.039804	
7025	140375.190	33610.927	-21.024	-2951247.994560	
7024	140369.402	33600.419	-21.020	-2950564.830040	
7023	140363.612	33589.907	-21.058	-2955776.941496	
7058	140357.804	33579.361	-11.858	-1664362.839832	
7075	140357.082	33578.049	-3.692	-518198.346744	
7076	140361.444	33575.669	9.019	1265919.863436	
7021	140367.722	33587.068	22.335	3135113.070870	
7019	140373.730	33598.004	11.769	1652058.428370	
7018	140376.624	33598.837	-4.354	-611199.820896	
7017	140386.022	33593.650	-8.089	-1135582.531958	
7016	140386.861	33590.748	-13.814	-1939304.097854	
7015	140380.848	33579.836	-22.250	-3123473.868000	
7078	140374.591	33568.498	-13.715	-1925237.515565	
合計			1622.389550		
合計面積			811.1947750		
地積			811.19	㎡	

地番 I 10-2072-10					
NO	Xn	Yn	Yn+1-Yn-1	Xn・(Yn+1-Yn-1)	
7038	140388.410	33598.000	-4.337	-608864.534170	
7039	140391.319	33598.830	10.351	1453190.542969	
7040	140396.555	33608.351	16.757	2352625.072135	
7035	140383.424	33615.587	-2.278	-319793.439872	
7036	140378.176	33606.073	-12.420	-1743496.945920	
7037	140379.019	33603.167	-8.073	-1133279.820387	
合計			380.874755		
合計面積			190.4373775		
地積			190.43	㎡	

地番 J 11-2072-11					
NO	Xn	Yn	Yn+1-Yn-1	Xn・(Yn+1-Yn-1)	
7015	140380.848	33579.836	3.690	516601.520640	
7016	140386.861	33590.748	13.814	1939304.097854	
7017	140386.022	33593.650	8.089	1135582.531958	
7018	140376.624	33598.837	4.354	611199.820896	
7019	140373.730	33598.004	-11.769	-1652058.428370	
7021	140367.722	33587.068	-18.168	-2550200.773296	
合計			428.769682		
合計面積			214.3848410		
地積			214.38	㎡	

地番 K 12-2072-12					
NO	Xn	Yn	Yn+1-Yn-1	Xn・(Yn+1-Yn-1)	
7078	140374.591	33568.498	4.167	584940.820697	
7015	140380.848	33579.836	18.570	2606872.347360	
7021	140367.722	33587.068	-4.167	-584912.297574	
7076	140361.444	33575.669	-18.570	-2606512.015080	
合計			388.955403		
合計面積			194.477015		
地積			194.47	㎡	

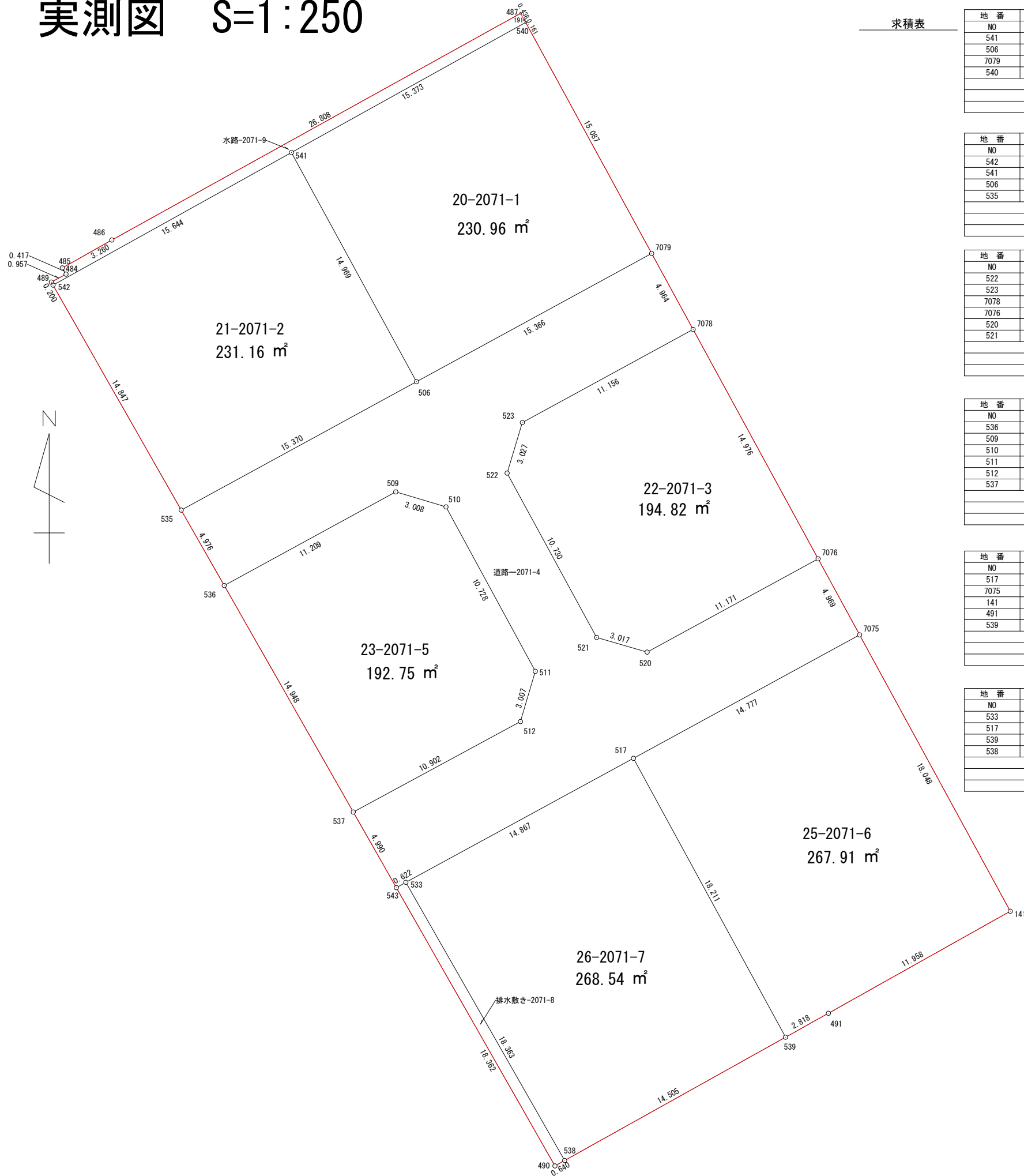
地番 L 13-2072-13					
NO	Xn	Yn	Yn+1-Yn-1	Xn・(Yn+1-Yn-1)	
7026	140380.986	33621.443	1.910	268127.683260	
7027	140386.777	33631.941	19.048	2674087.328296	
7069	140371.226	33640.491	-1.910	-268109.041660	
7070	140365.392	33630.031	-19.048	-2673679.986816	
合計			425.983080		
合計面積			212.9915400		
地積			212.99	㎡	

地番 M 公園-2072-14					
NO	Xn	Yn	Yn+1-Yn-1	Xn・(Yn+1-Yn-1)	
7027	140386.777	33631.941	-5.613	-787990.979301	
7028	140388.390	33634.878	3.465	488445.771350	
7044	140387.429	33635.406	4.912	689583.051248	
7030	140389.835	33639.790	5.843	820297.805905	
7068	140389.332	33641.249	2.967	416535.148044	
188	140385.918	33642.757	3.001	421298.139918	
167	140382.686	33644.250	5.068	711459.452648	
190	140375.269	33647.825	3.078	432075.077982	
173	140375.040	33647.328	-7.334	-1029510.543360	
7069	140371.226	33640.491	-15.387	-2159892.054462	
合計			300.869972		
合計面積			150.4349860		
地積			150.43	㎡	

地番 N 15-2072-15					
NO	Xn	Yn	Yn+1-Yn-1	Xn・(Yn+1-Yn-1)	
7025	140375.190	33610.927	1.891	265449.484290	
7026	140380.986	33621.443	19.104	2681838.356544	
7070	140365.392	33630.031	-1.891	-265430.956272	
7071	140359.547	33619.552	-19.104	-2681428.785888	
合計			428.098674		
合計面積			214.0493370		
地積			214.04	㎡	

地番 O 16-2072-16					
NO	Xn	Yn	Yn+1-Yn-1	Xn・(Yn+1-Yn-1)	
7024	140369.402	33600.419	1.863	261508.195926	
7025	140375.190</				

実測図 S=1:250



求積表

地番 A 20-2071-1				
NO	Xn	Yn	Yn+1-Yn-1	Xn · (Yn+1-Yn-1)
541	140384.734	33545.455	-6.268	-879931.512712
506	140371.596	33552.629	20.666	2900919.402936
7079	140378.949	33566.121	6.268	879895.252332
540	140392.194	33558.897	-20.666	-2901345.081204
合計				-461.938648
合計面積				230.9693240
地積				230.96 m ²

地番 B 21-2071-2				
NO	Xn	Yn	Yn+1-Yn-1	Xn · (Yn+1-Yn-1)
542	140377.133	33531.782	6.319	887043.103427
541	140384.734	33545.455	20.847	2926600.549698
506	140371.596	33552.629	-6.319	-887008.115124
535	140364.235	33539.136	-20.847	-2926173.207045
合計				462.330956
合計面積				231.1654780
地積				231.16 m ²

地番 C 22-2071-3				
NO	Xn	Yn	Yn+1-Yn-1	Xn · (Yn+1-Yn-1)
522	140366.356	33557.829	-4.262	-598241.409272
523	140369.254	33558.702	10.669	1497599.570926
7078	140374.591	33568.498	16.967	2381735.685497
7076	140361.444	33575.669	-2.636	-369992.766384
520	140356.095	33565.862	-12.705	-1783224.186975
521	140356.934	33562.964	-8.033	-1127487.250822
合計				389.642970
合計面積				194.8214850
地積				194.82 m ²

地番 D 23-2071-5				
NO	Xn	Yn	Yn+1-Yn-1	Xn · (Yn+1-Yn-1)
536	140359.912	33541.601	2.436	341916.745632
509	140365.280	33551.441	12.722	1785727.092160
510	140364.420	33554.323	8.006	1123757.546520
511	140354.995	33559.447	4.271	599456.183645
512	140352.112	33558.594	-10.442	-1465556.753504
537	140346.926	33549.005	-16.993	-2384915.313518
合計				385.500935
合計面積				192.7504675
地積				192.75 m ²

地番 E 25-2071-6				
NO	Xn	Yn	Yn+1-Yn-1	Xn · (Yn+1-Yn-1)
517	140350.005	33565.077	4.250	596487.521250
7075	140357.082	33578.049	21.614	3033677.970348
141	140341.238	33586.691	-1.789	-251070.474782
491	140335.391	33576.260	-12.892	-1809203.860772
539	140334.018	33573.799	-11.183	-1569355.323294
合計				535.832750
合計面積				267.9163750
地積				267.91 m ²

地番 F 26-2071-7				
NO	Xn	Yn	Yn+1-Yn-1	Xn · (Yn+1-Yn-1)
533	140342.895	33552.020	3.946	553793.063670
517	140350.005	33565.077	21.779	3056682.758895
539	140334.018	33573.799	-3.946	-553758.035028
538	140326.952	33561.131	-21.779	-3056180.687608
合計				537.099929
合計面積				268.5499645
地積				268.54 m ²

地番 G 道路-2071-4				
NO	Xn	Yn	Yn+1-Yn-1	Xn · (Yn+1-Yn-1)
535	140364.235	33539.136	11.028	1547936.783580
506	140371.596	33552.629	26.985	3787927.518060
7079	140378.949	33566.121	15.869	2227673.541681
7078	140374.591	33568.498	-7.419	-1041439.090629
523	140369.254	33558.702	-10.669	-1497599.570926
522	140366.356	33557.829	4.262	598241.409272
521	140356.934	33562.964	8.033	1127487.250822
520	140356.095	33565.862	12.705	1783224.186975
7076	140361.444	33575.669	12.187	1710584.9178028
7075	140357.082	33578.049	-10.592	-1486662.212544
517	140350.005	33565.077	-26.029	-3653170.280145
533	140342.895	33552.020	-13.600	-1908663.372000
543	140342.591	33551.477	-3.015	-423132.911865
537	140346.926	33549.005	7.117	998849.072342
512	140352.112	33558.594	10.442	1465556.753504
511	140354.995	33559.447	-4.271	-599456.183645
510	140364.420	33554.323	-8.006	-1123757.546520
509	140365.280	33551.441	-12.722	-1785727.092160
536	140359.912	33541.601	-12.305	-1727128.717160
合計				744.456670
合計面積				372.2283350
地積				372.22 m ²

地番 H 排水敷き-2071-8				
NO	Xn	Yn	Yn+1-Yn-1	Xn · (Yn+1-Yn-1)
543	140342.591	33551.477	-8.552	-1200209.838232
533	140342.895	33552.020	9.654	1354870.308330
538	140326.952	33561.131	8.552	1200076.093504
490	140326.640	33560.572	-9.654	-1354713.382560
合計				23.181042
合計面積				11.5905210
地積				11.59 m ²

地番 A 水路-2071-9				
NO	Xn	Yn	Yn+1-Yn-1	Xn · (Yn+1-Yn-1)
489	140377.307	33531.683	0.743	104300.339101
484	140377.762	33532.525	0.629	88297.612298
485	140378.120	33532.312	-2.628	-368913.699360
486	140379.719	33535.153	26.289	3690442.432791
487	140392.714	33558.601	23.667	3322674.362238
191	140392.335	33558.820	0.296	41556.131160
540	140392.194	33558.897	-13.365	-1876341.672810
541	140384.734	33545.455	-27.115	-3806532.062410
542	140377.133	33531.782	-13.772	-1933273.875676
合計				36.966052
合計面積				18.4830260
地積				18.48 m ²

所在	丸亀市飯山町東坂元字楠見2071
地番	
作製年月日	令和5年5月17日
作製者	高松市円座町1580-10 土地家屋調査士・二級建築士 岡野上竜二 宅地建物取引士